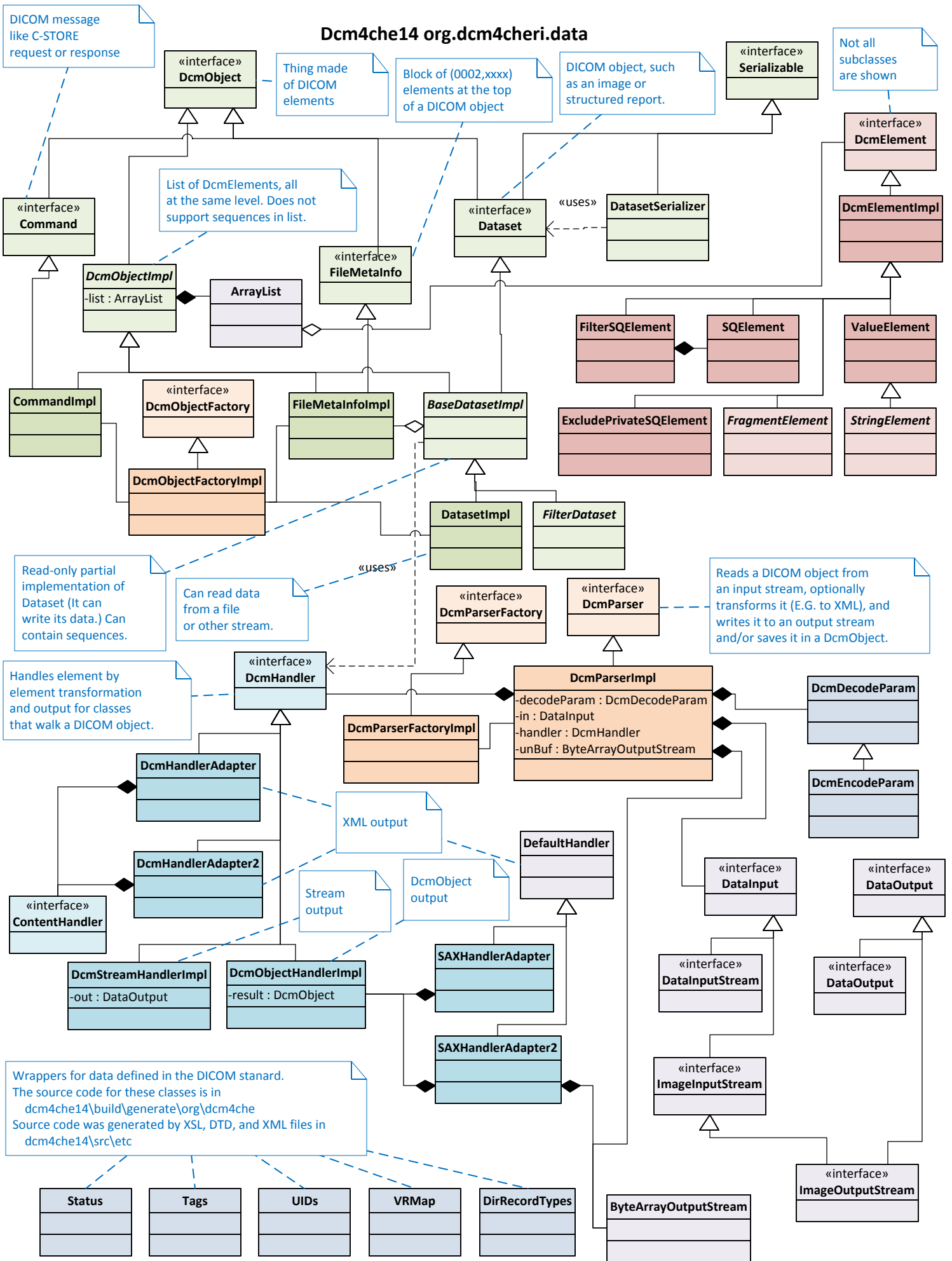
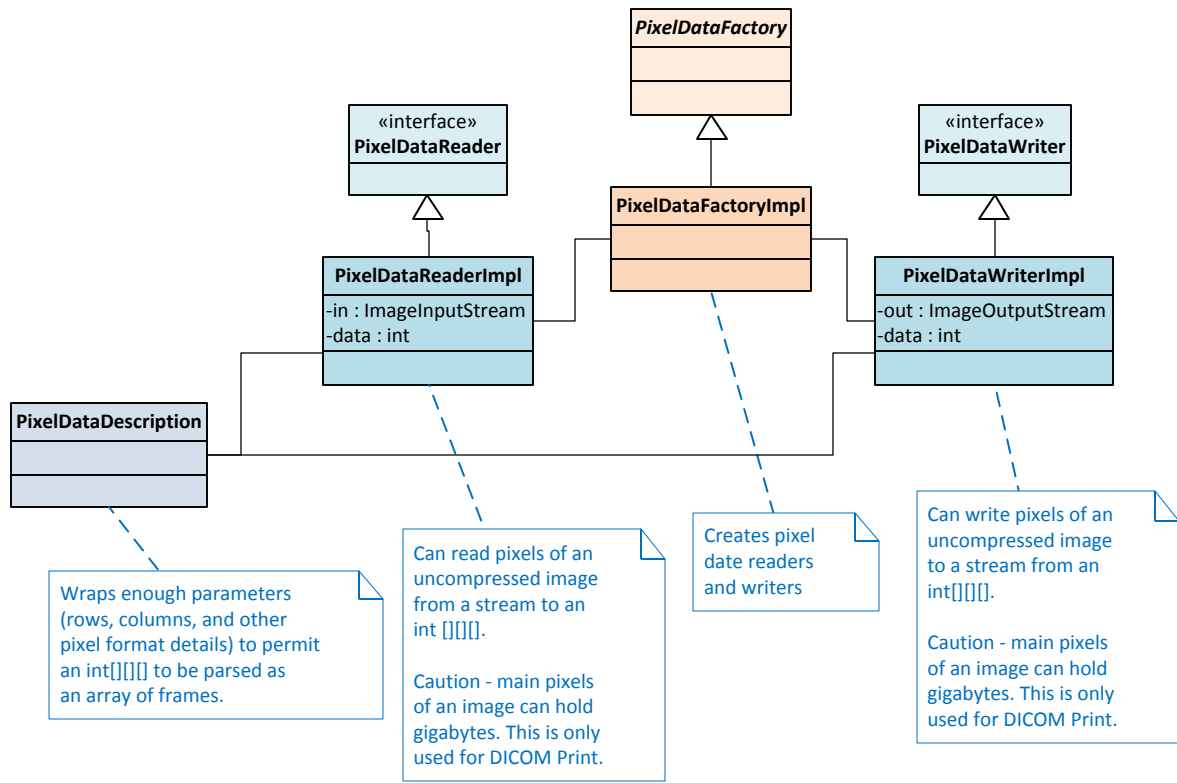
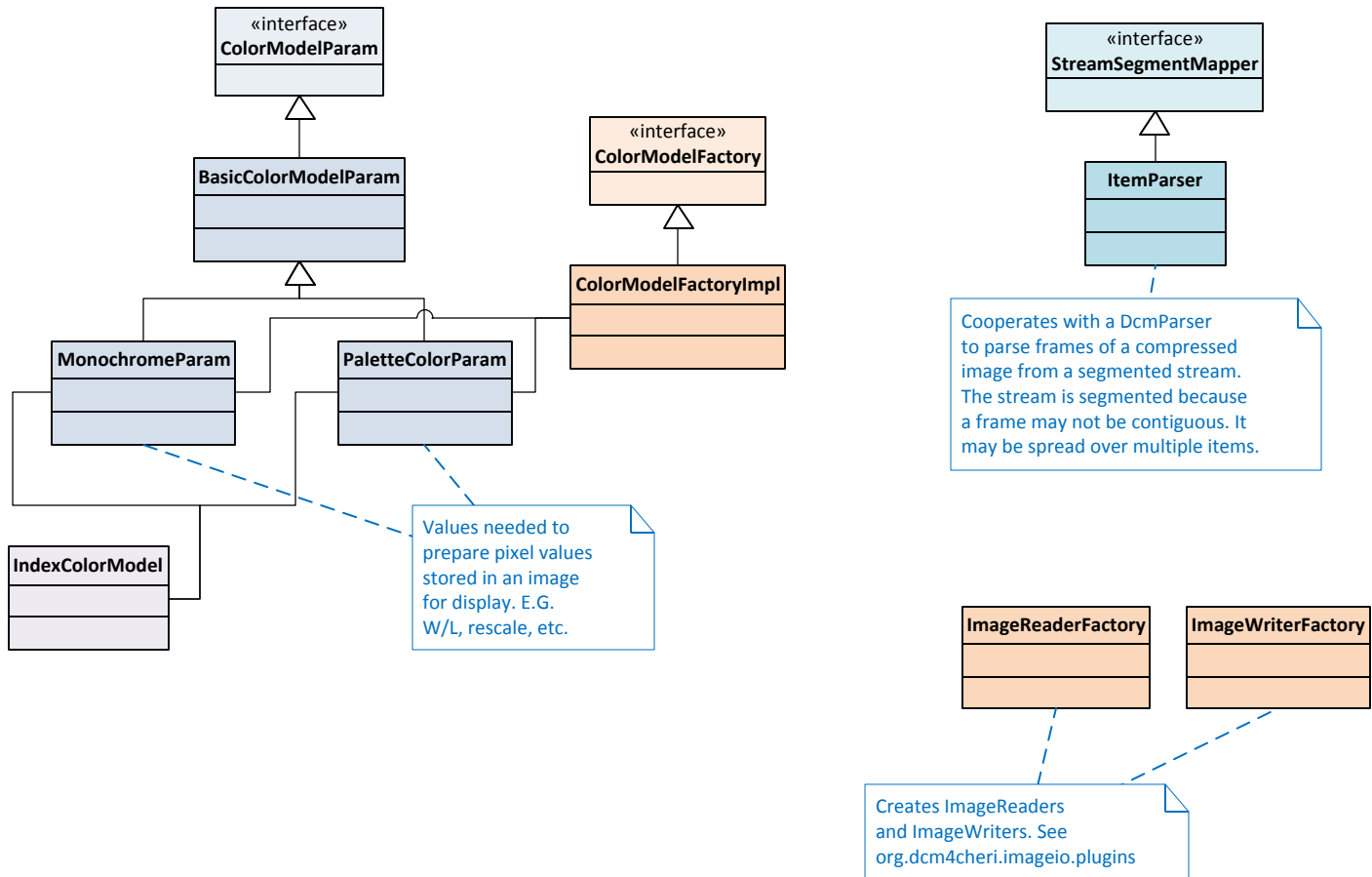


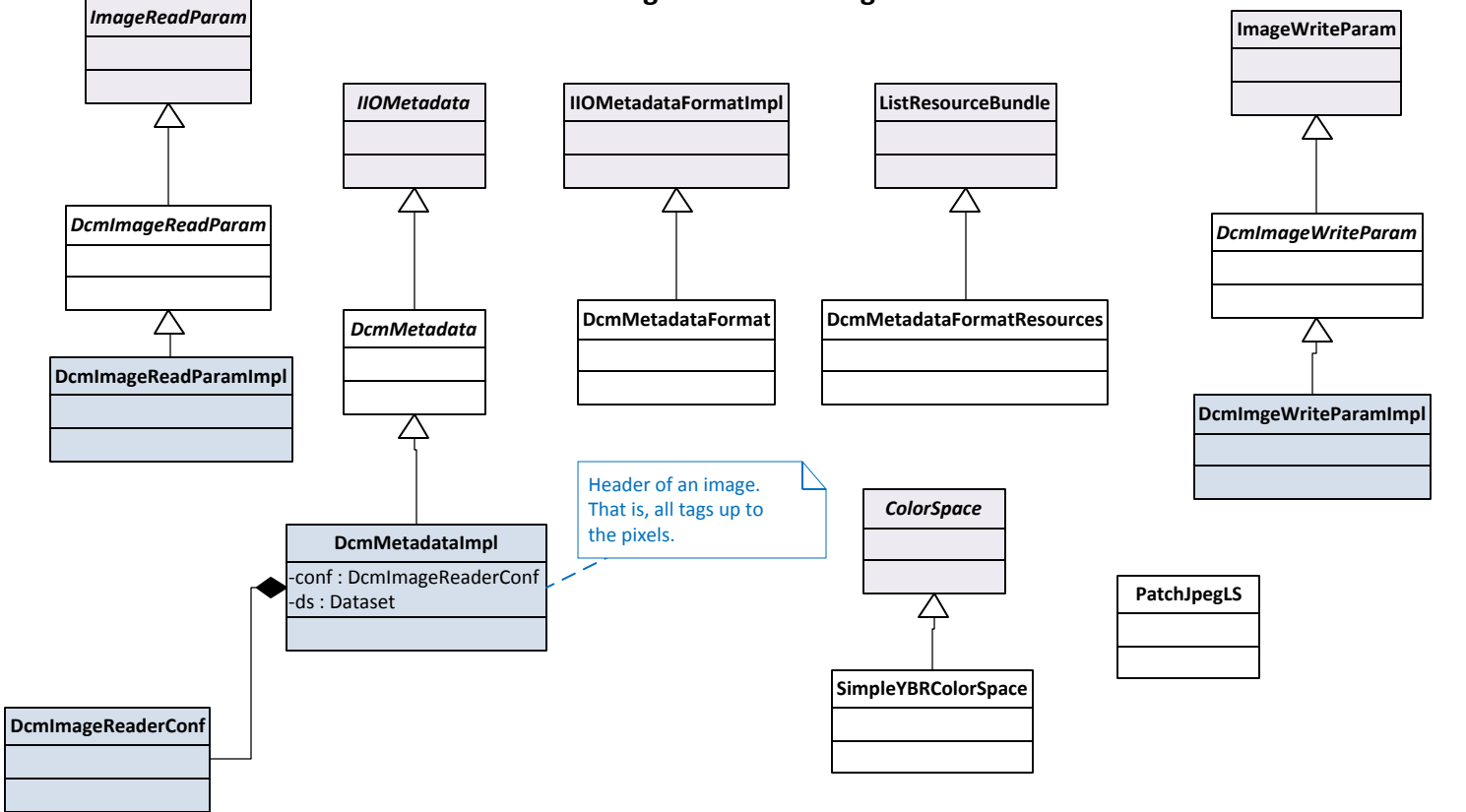
Dcm4che14 org.dcm4cheri.data



dcm4che14 org.dcm4cheri.image



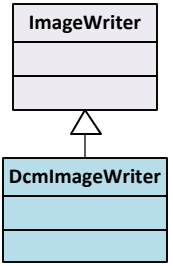
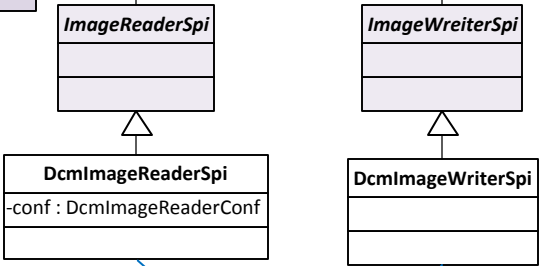
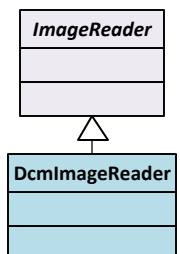
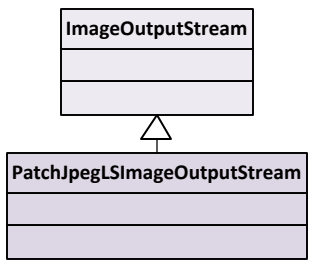
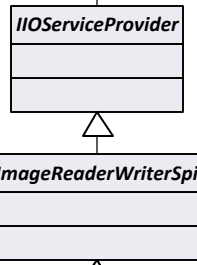
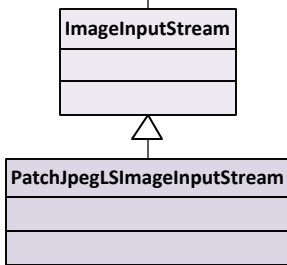
Dcm4che org.dcm4cheri.imageio



Header of an image.
That is, all tags up to
the pixels.

«interface»
DataInput

«interface»
RegisterableService



Can read a compressed image
from a stream, saving the header
in a Dataset, and the pixels of any
frame in a BufferedImage.

Given a format name such as
"DICOM", finds a codec that can
compress/decompress that format.

Can compress and write a
BufferedImage, wrapping it
with enough tags to form a
complete image. By default,
the tags make asecondary
capture image.